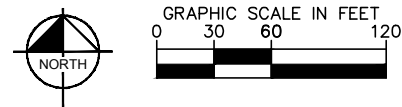
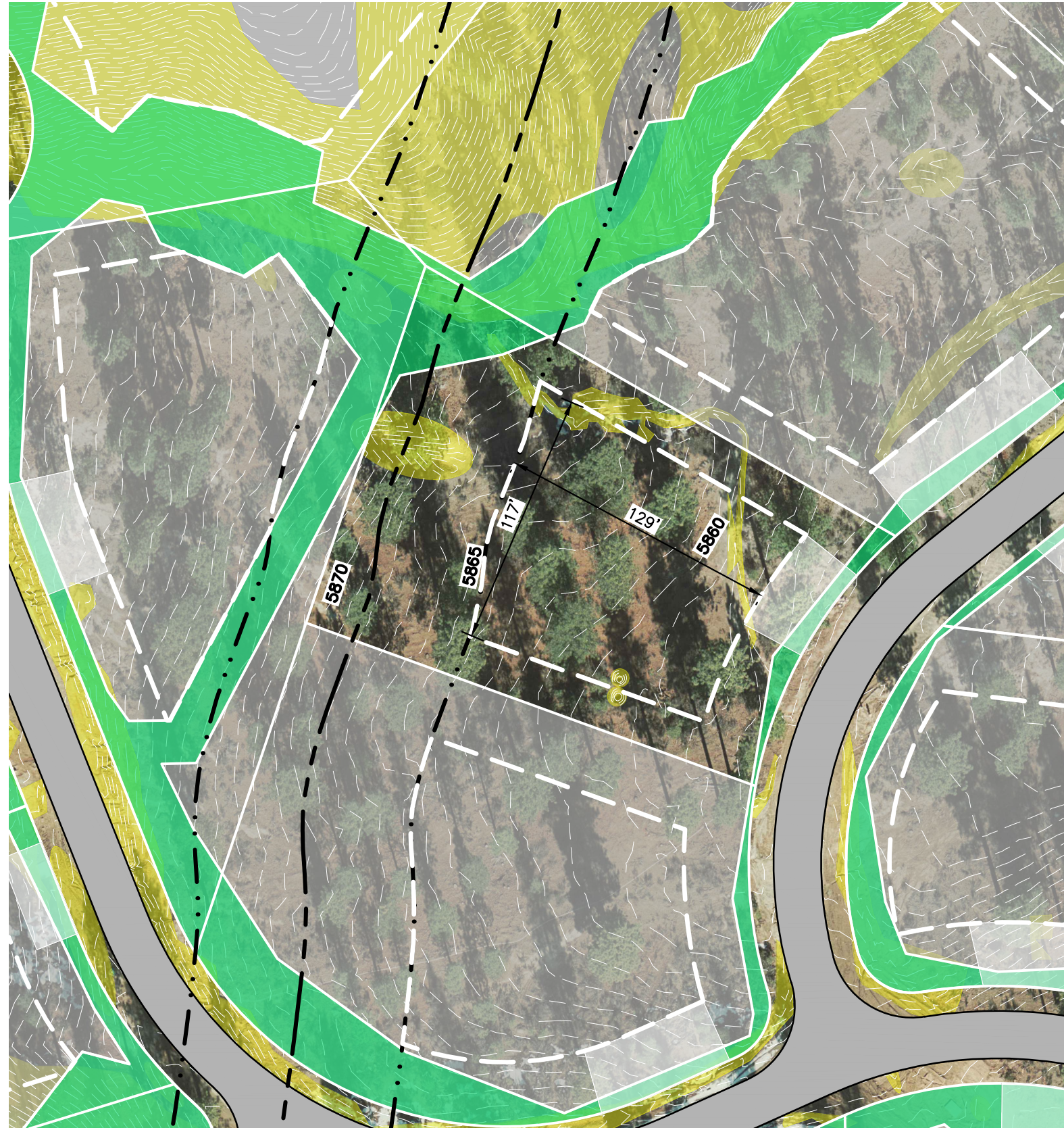


K:\REN_CIVIL\068151204 - CLEAR CREEK TAHOE\NEW WORK\UNITS 3B-3C-6-AND-ALPINE LAKE\07 CAD_ PHASE 6\EXHIBITS\2021.03.05 HOMESITE PLANS\HOMESITE-PART 7 (LOTS 145-148, 170, 386, 387).DWG
7/18/2023 7:51 AM

DWG NAME
LAST SAVED



HOMESITE 386



CLEAR CREEK
TAHOE

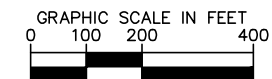
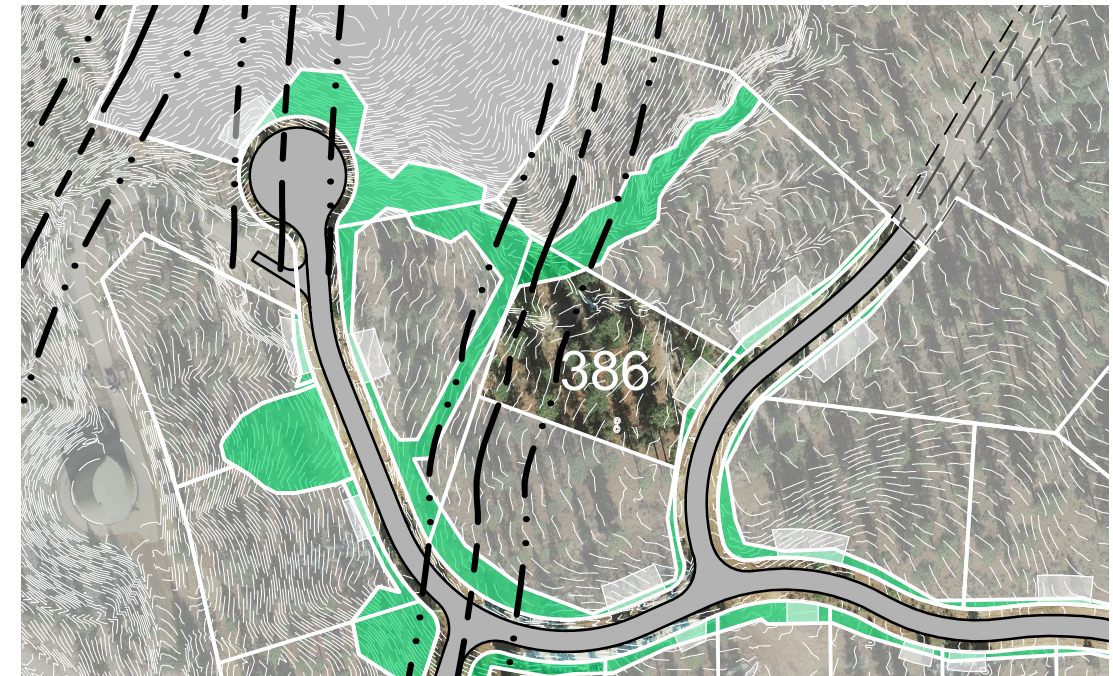
Lot Size: 0.80 Acres
Building Envelope: 13,838 Sq. Ft.

THIS LOT MAY BE SUBJECT TO HILLSIDE
GRADING REQUIREMENTS PER DOUGLAS
COUNTY CODE SECTION 20.690.030 (K).

EASEMENTS, SETBACKS, DRIVEWAY
ENVELOPES, AND BUILDING ENVELOPE ARE
PRELIMINARY AND SUBJECT TO CHANGE WITH
FINAL DESIGN.

REFER TO RECORDED FINAL MAP AND CLEAR
CREEK TAHOE PROPERTY REPORT FOR
ADDITIONAL ENCUMBRANCES, EASEMENTS,
AND RESTRICTIONS FOR DEVELOPMENT OF
THIS LOT.

- LOT LINE
- BUILDING ENVELOPE
- SUGGESTED DRIVEWAY LOCATIONS
- SLOPE CONSTRAINTS (+25%)
- DRAINAGE EASEMENTS
- FAULT LINE
- FAULT SETBACK LINE



Kimley»Horn

7900 Rancharrah Parkway
Suite 100
Reno, Nevada 89511
775-200-1960

NOTE: THIS PLAN IS CONCEPTUAL IN NATURE AND HAS BEEN PRODUCED WITHOUT
THE BENEFIT OF A SURVEY, TOPOGRAPHY, UTILITIES, CONTACT WITH THE CITY, ETC.