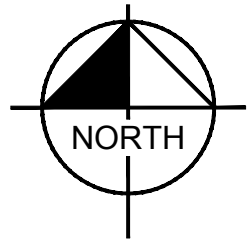


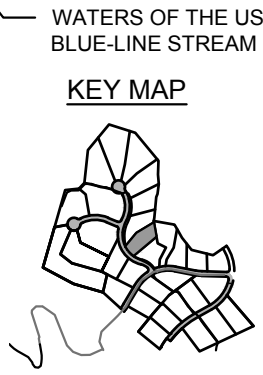
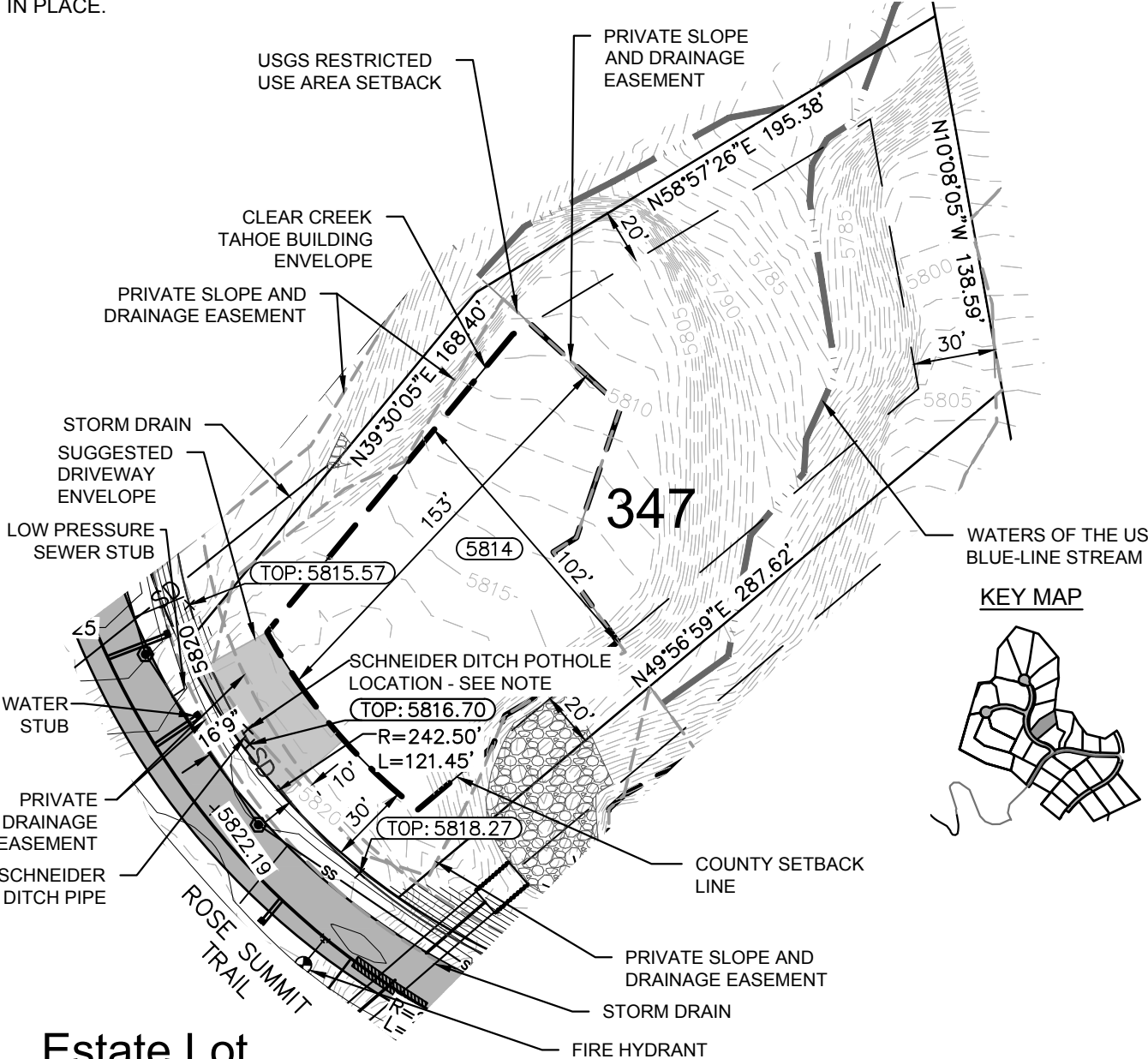
A RESTRICTED USE AREA SETBACK IS SHOWN ON THIS PLAN AS DESIGNATED BY THE U.S. ARMY CORPS OF ENGINEERS. NEW IMPROVEMENTS AND GRADING ARE PROHIBITED IN THIS AREA.

THIS EXHIBIT IS NOT INTENDED FOR USE AS A SURVEY DOCUMENT. REFER TO RECORDED FINAL MAP AND CLEAR CREEK TAHOE PROPERTY REPORT FOR ALL ENCUMBRANCES, EASEMENTS, AND RESTRICTIONS FOR DEVELOPMENT OF THIS LOT.



THE SCHNEIDER DITCH PIPE APPROXIMATE LOCATION IS SHOWN ON THIS PLAN FOR REFERENCE. THE PIPE HAS BEEN LOCATED APPROXIMATELY 16'9" FROM THE EDGE OF PAVEMENT ON THIS LOT. CONTRACTOR SHALL LOCATE THE SCHNEIDER DITCH PIPE BEFORE CONSTRUCTION AND PROTECT IN PLACE.

PLOTTED BY WOLF, ARIAHNA
 DWG NAME: K:\REV\CIVIL\068151204 - CLEAR CREEK TAHOE\NEW WORK\UNITS 3B-3C-6-AND-ALPINE-LAKE\07 CAD\EXHIBITS\2021.06.09 PLOT PLANS 3B\ PLOTPLANS 3B.DWG
 LAST SAVED: 8/9/2024 12:15 PM



Estate Lot

LOT AREA: 44,908 SF (1.03 AC)
 BUILDING ENVELOPE AREA: 12,252 SF (0.28 AC)

Lot 347

Clear Creek at Tahoe
 Douglas County, Nevada

