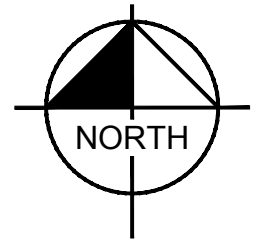


THIS LOT REQUIRES THE CONSTRUCTION AND ACCEPTANCE OF THE ZONE 1 TANK AND BOOSTER PUMP STATION PROJECT PRIOR TO ISSUANCE OF CERTIFICATE OF OCCUPANCY.

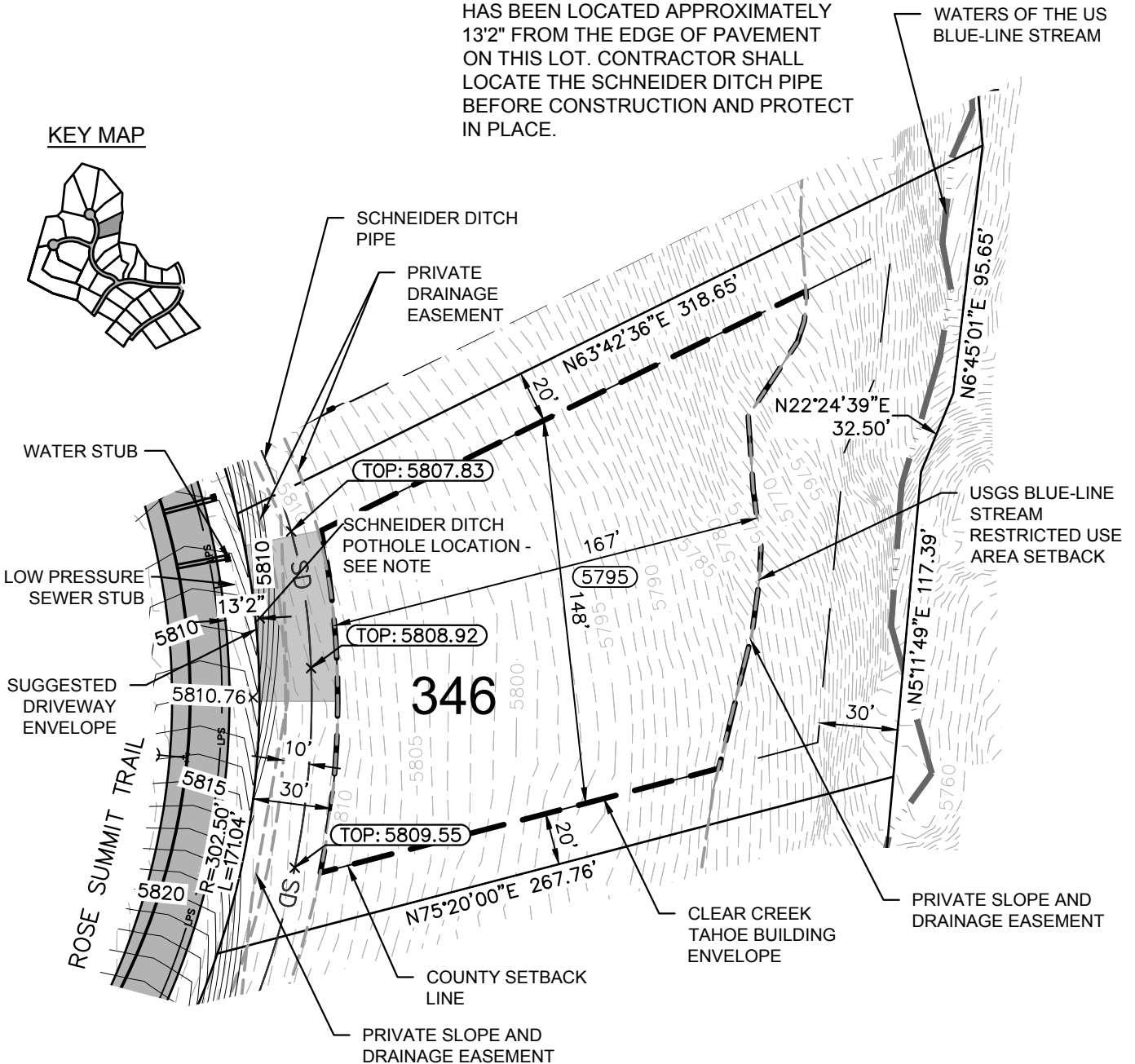
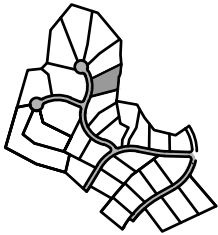
A RESTRICTED USE AREA SETBACK IS SHOWN ON THIS PLAN AS DESIGNATED BY THE U.S. ARMY CORPS OF ENGINEERS. NEW IMPROVEMENTS AND GRADING ARE PROHIBITED IN THIS AREA.

THIS EXHIBIT IS NOT INTENDED FOR USE AS A SURVEY DOCUMENT. REFER TO RECORDED FINAL MAP AND CLEAR CREEK TAHOE PROPERTY REPORT FOR ALL ENCUMBRANCES, EASEMENTS, AND RESTRICTIONS FOR DEVELOPMENT OF THIS LOT.

THE SCHNEIDER DITCH PIPE APPROXIMATE LOCATION IS SHOWN ON THIS PLAN FOR REFERENCE. THE PIPE HAS BEEN LOCATED APPROXIMATELY 13'2" FROM THE EDGE OF PAVEMENT ON THIS LOT. CONTRACTOR SHALL LOCATE THE SCHNEIDER DITCH PIPE BEFORE CONSTRUCTION AND PROTECT IN PLACE.



KEY MAP

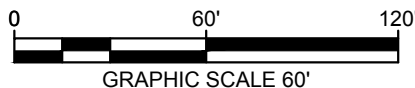


Estate Lot

LOT AREA: 52,052 SF (1.19 AC)
 BUILDING ENVELOPE AREA: 24,563 SF (0.56 AC)

Lot 346

Clear Creek at Tahoe
 Douglas County, Nevada



PLOTTED BY WOLF, ARIAHNA
 DWG NAME K:\REN_CIVIL\068151204 - CLEAR CREEK TAHOE\NEW WORK\UNITS 3B-3C-6-AND-ALPINE-LAKE\07 CAD\EXHIBITS\2021.06.09 PLOT PLANS 3B\ PLOTPLANS 3B.DWG
 LAST SAVED 8/13/2024 3:20 PM