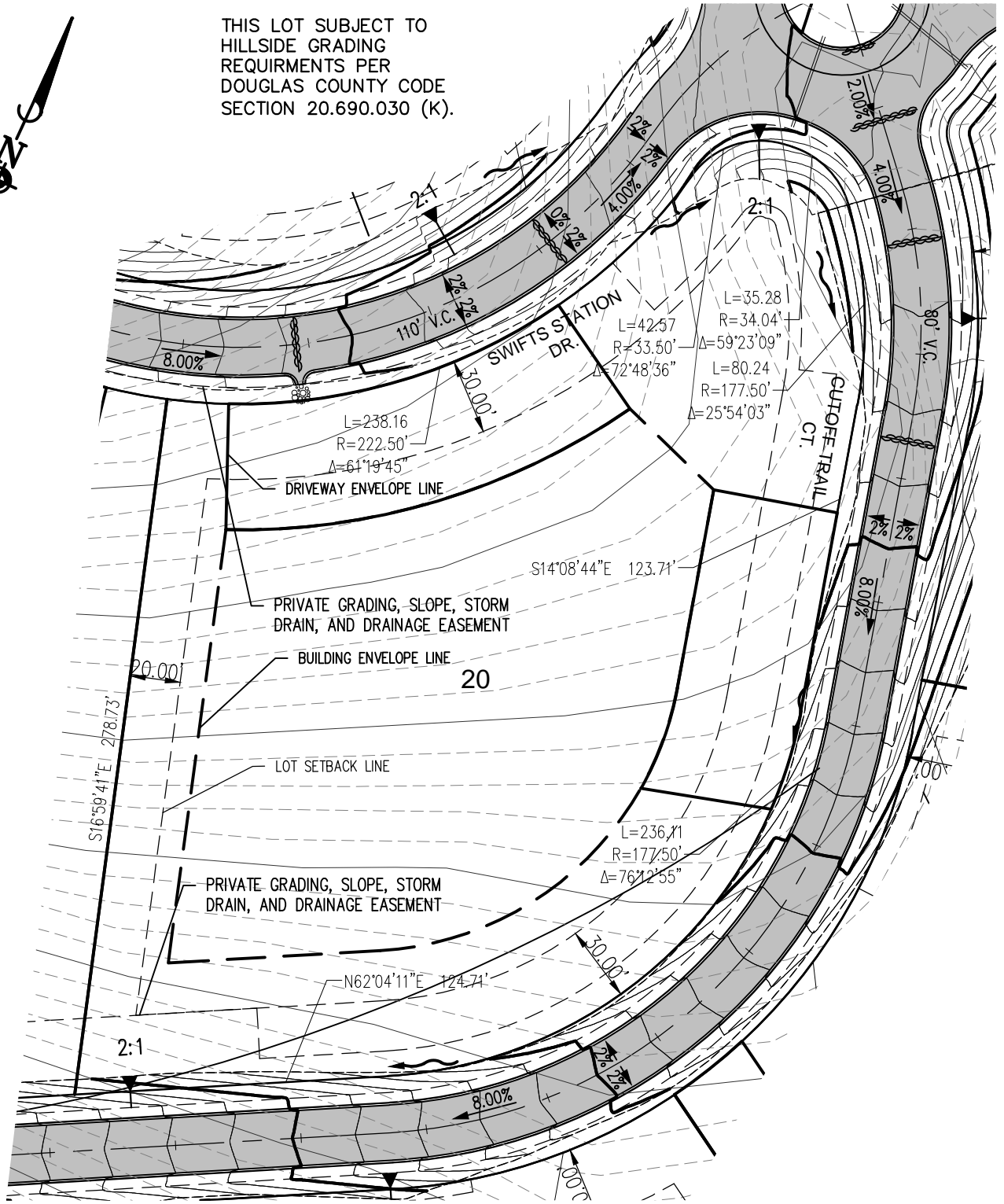
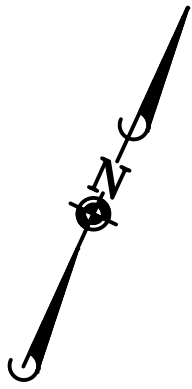


THIS LOT SUBJECT TO
 HILLSIDE GRADING
 REQUIREMENTS PER
 DOUGLAS COUNTY CODE
 SECTION 20.690.030 (K).



APN:
 ADDRESS:
 LOT AREA: 79,095 SF (1.82 ACRES)

© 2015 MANHARD CONSULTING, LTD. ALL RIGHTS RESERVED

Manhard
 CONSULTING LTD

9900 Double R Blvd, Suite 101, Reno, NV 89521 tel: (775) 746-3300 fax: (775) 746-3320 www.manhard.com
 Civil Engineers - Surveyors - Water Resources Engineers - Water & Wastewater Engineers
 Construction Managers - Environmental Scientists - Landscape Architects - Planners

CLEAR CREEK AT TAHOE	
DOUGLAS COUNTY, NEVADA	
LOT 20	
PROJ. MGR.:	SHEET
DRAWN BY:	1 OF 1
DATE: 5/24/2016	
SCALE: 1"=60'	

Dwg Name: P:\Cepcon\dwg\Eng\Final Drawings\Plan Set\Phase 1\Individual Lot Plans\Individual Lots 1-20.dwg Updated By: Tharding 15:12