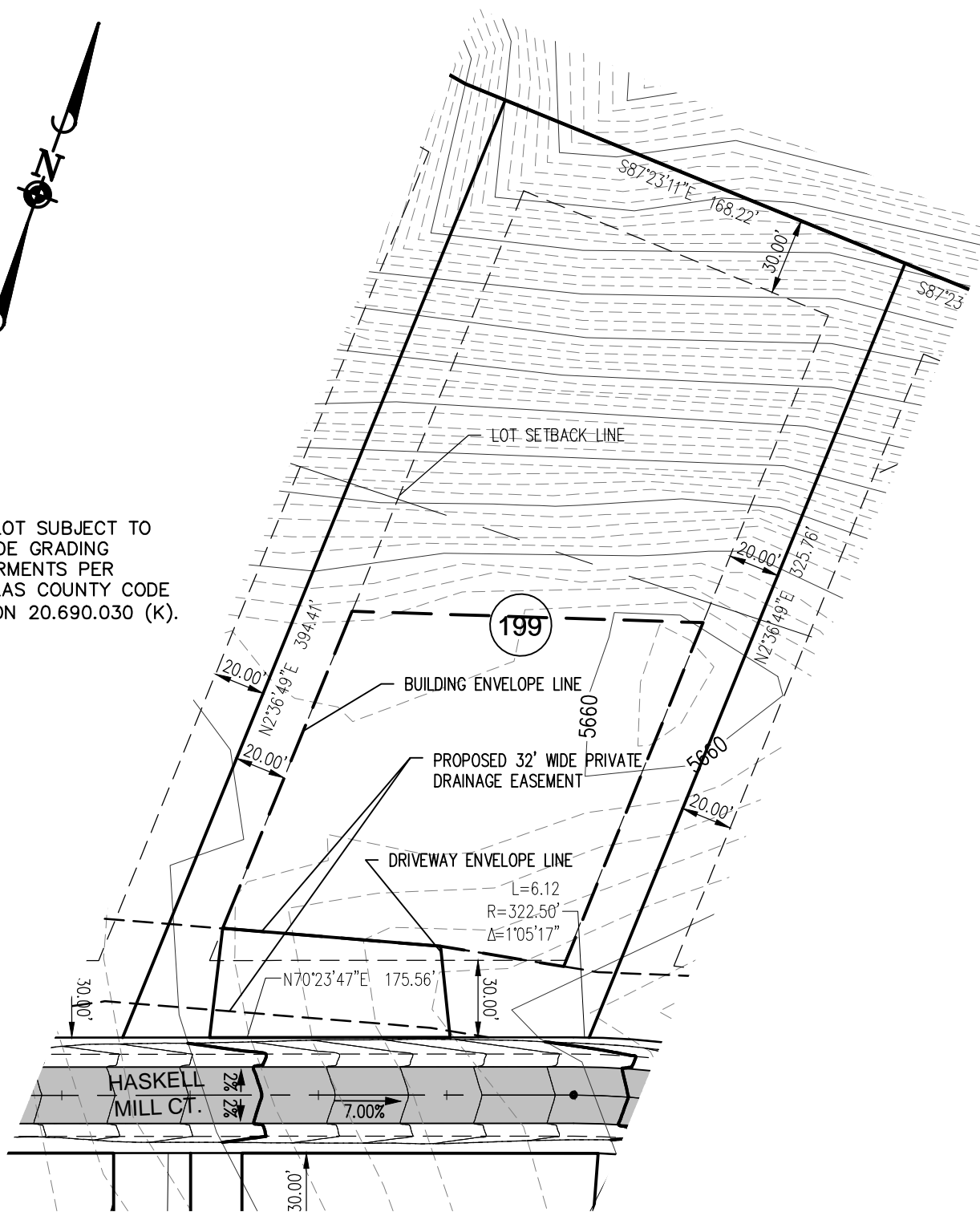


THIS LOT SUBJECT TO
HILLSIDE GRADING
REQUIREMENTS PER
DOUGLAS COUNTY CODE
SECTION 20.690.030 (K).



APN:
ADDRESS:
LOT AREA: 60,569 SF (1.39 ACRES)

© 2015 MANHARD CONSULTING, LTD. ALL RIGHTS RESERVED

Manhard
CONSULTING LTDTM

9900 Double R Blvd, Suite 101, Reno, NV 89521 tel: (775) 746-3500 fax: (775) 746-3520 www.manhard.com
Civil Engineers - Surveyors - Water Resources Engineers - Water & Wastewater Engineers
Construction Managers - Environmental Scientists - Landscape Architects - Planners

CLEAR CREEK AT TAHOE	
DOUGLAS COUNTY, NEVADA	
LOT 199	
PROJ. MGR.: _____	SHEET
DRAWN BY: _____	1 OF 1
DATE: 5/26/2016	
SCALE: 1"=60'	