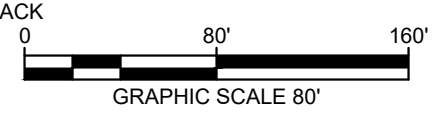
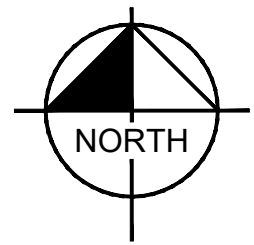
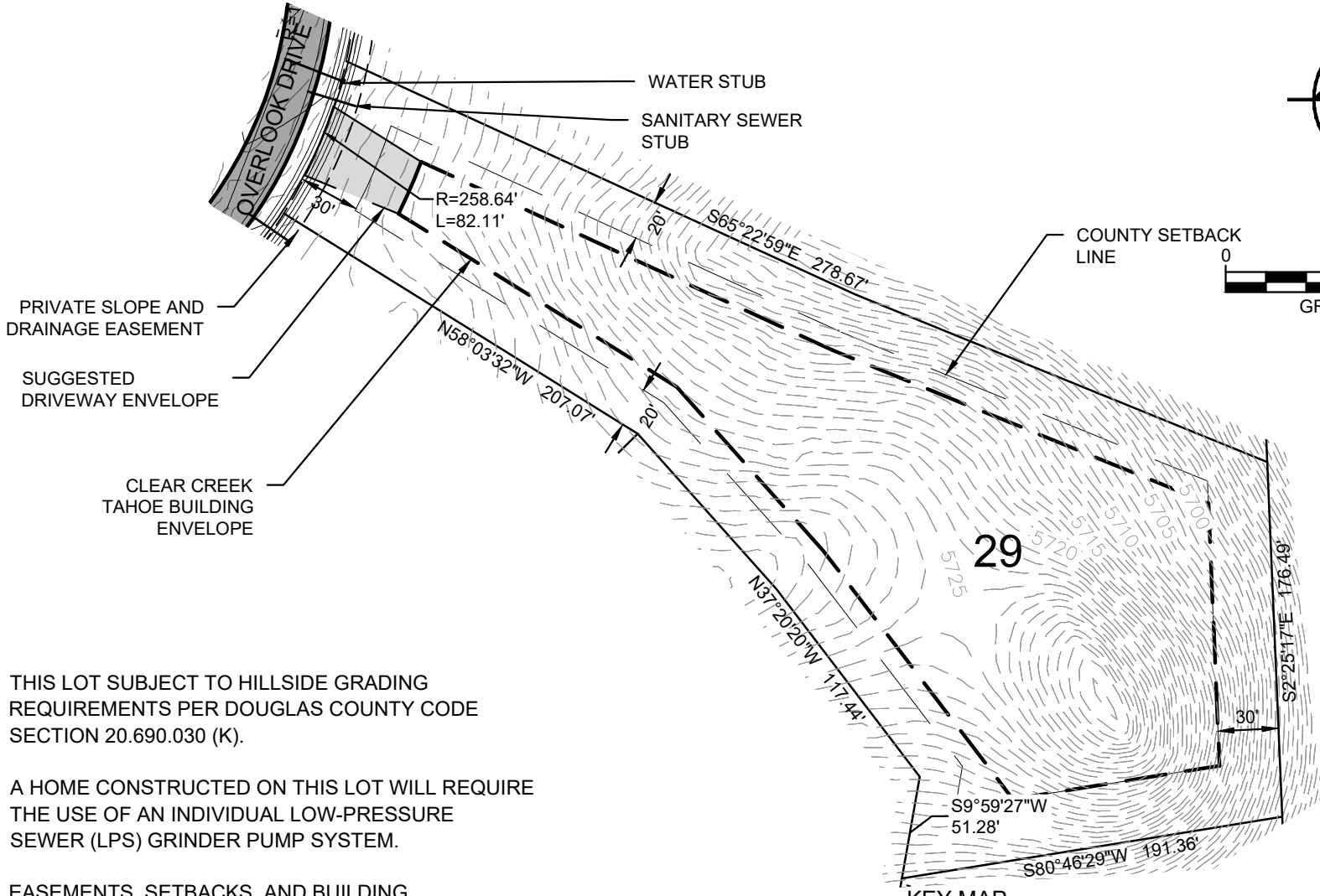


C:\MSDCAD\DRAWING\2009\10\13\11:33 AM\K:\VPL\CIVIL\068161200-CLEAR CREEK TAHOE\DWG\UNIT 3A\EXHIBITS\PLANSHEETS\PROP\Q\MPRMS\SS\MS PLOT PLAN - LOT 69.DWG
9/16/2009 9:35:33 PM

PLOTTED BY
DWG NAME
LAST SAVED



THIS LOT SUBJECT TO HILLSIDE GRADING REQUIREMENTS PER DOUGLAS COUNTY CODE SECTION 20.690.030 (K).

A HOME CONSTRUCTED ON THIS LOT WILL REQUIRE THE USE OF AN INDIVIDUAL LOW-PRESSURE SEWER (LPS) GRINDER PUMP SYSTEM.

EASEMENTS, SETBACKS, AND BUILDING ENVELOPES ARE PRELIMINARY AND SUBJECT TO CHANGE WITH FINAL DESIGN.

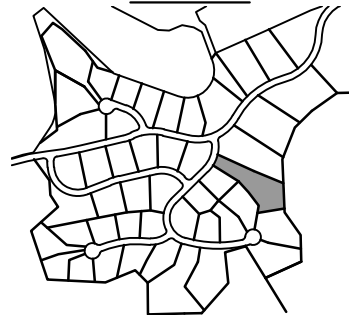
Golf Estate Lot

LOT AREA: 80,410 SF (1.85 AC)
BUILDING ENVELOPE AREA: 40,712 SF (0.93 AC)

Lot 29

Clear Creek at Tahoe
Douglas County, Nevada

KEY MAP



CLEAR CREEK
TAHOE

Kimley»Horn

5370 Kietzke Lane
Suite 100
Reno, Nevada 89511
972-335-3580

NOTE: THIS PLAN IS CONCEPTUAL IN NATURE AND HAS BEEN PRODUCED WITHOUT THE BENEFIT OF A SURVEY, TOPOGRAPHY, UTILITIES, CONTACT WITH THE CITY, ETC.