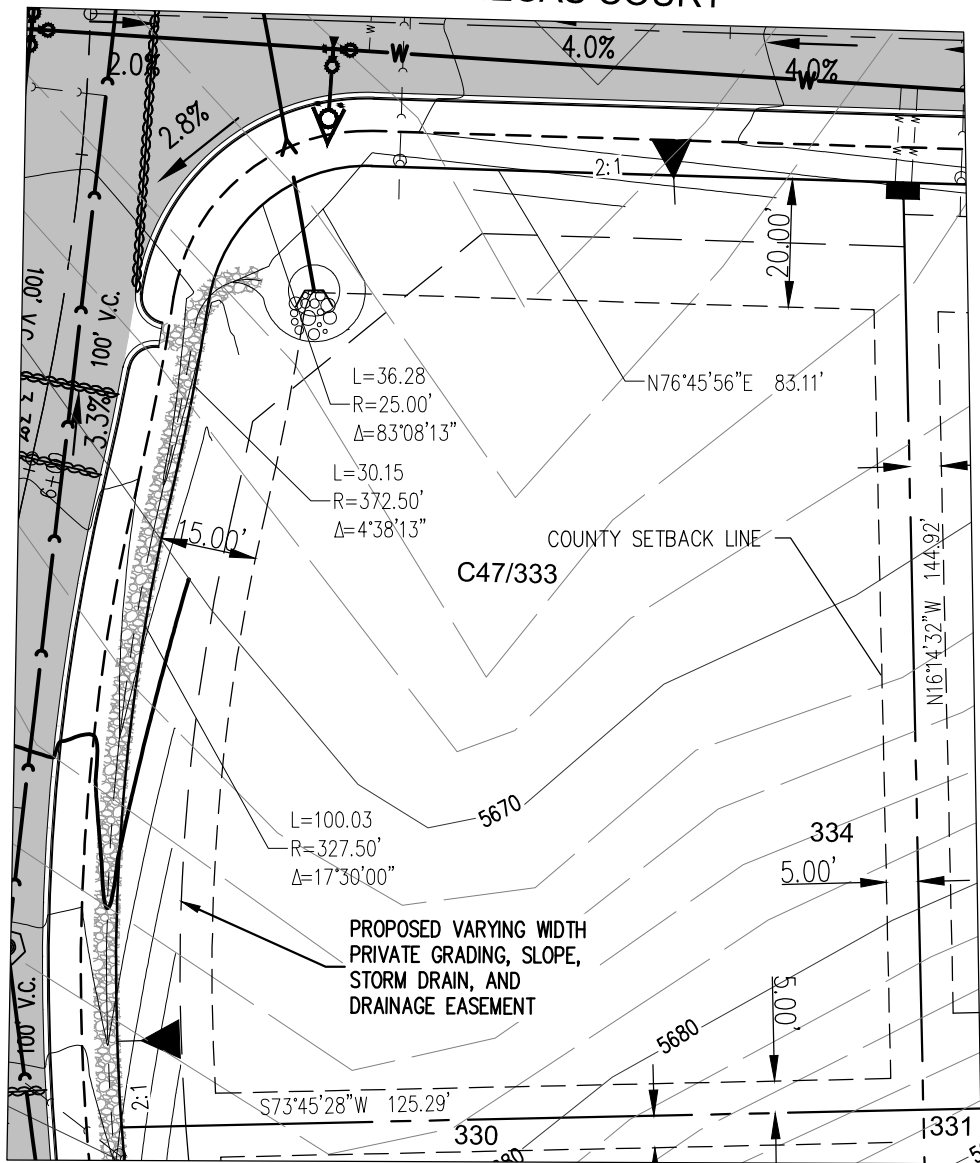
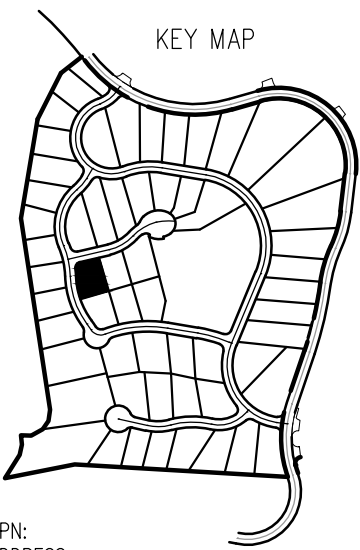


**SENECAS COURT**

**MILL RACE LOOP**



KEY MAP



THIS LOT SUBJECT TO HILLSIDE GRADING REQUIREMENTS PER DOUGLAS COUNTY CODE SECTION 20.690.030 (K).

TYPICAL:  
\* THE SUM TOTAL OF SIDE SETBACKS MUST EQUAL A MINIMUM OF 25- FEET. (SEE C.C.T DESIGN GUIDELINE COTTAGE COMMUNITY ADDENDUM)

APN:  
ADDRESS:  
LOT AREA: 17,423 SF (0.40 ACRES)

© 2015 MANHARD CONSULTING, LTD. ALL RIGHTS RESERVED

**Manhard**  
CONSULTING LTD

3830 Double R Blvd, Suite 101, Reno, NV 89521 tel: (775) 746-3500 fax: (775) 746-3520 www.manhard.com  
Civil Engineers • Surveyors • Water Resources Engineers • Water & Wastewater Engineers  
Construction Managers • Environmental Scientists • Landscape Architects • Planners

<b>CLEAR CREEK AT TAHOE UNIT 2</b>	
<b>DOUGLAS COUNTY, NEVADA</b>	
<b>LOT 333</b>	
PROJ. MGR.: <b>DMK</b>	SHEET
DRAWN BY:	<b>EXHIBIT 1</b>
DATE: <b>8/7/2017</b>	<b>###</b>
SCALE: <b>1"=30'</b>	

08:51 Dwg Name: P:\Capden\Eng\Final Drawings\Plan Set\Unit 2\Exhibits\Plan with setback limits.dwg Updated By: Tharding