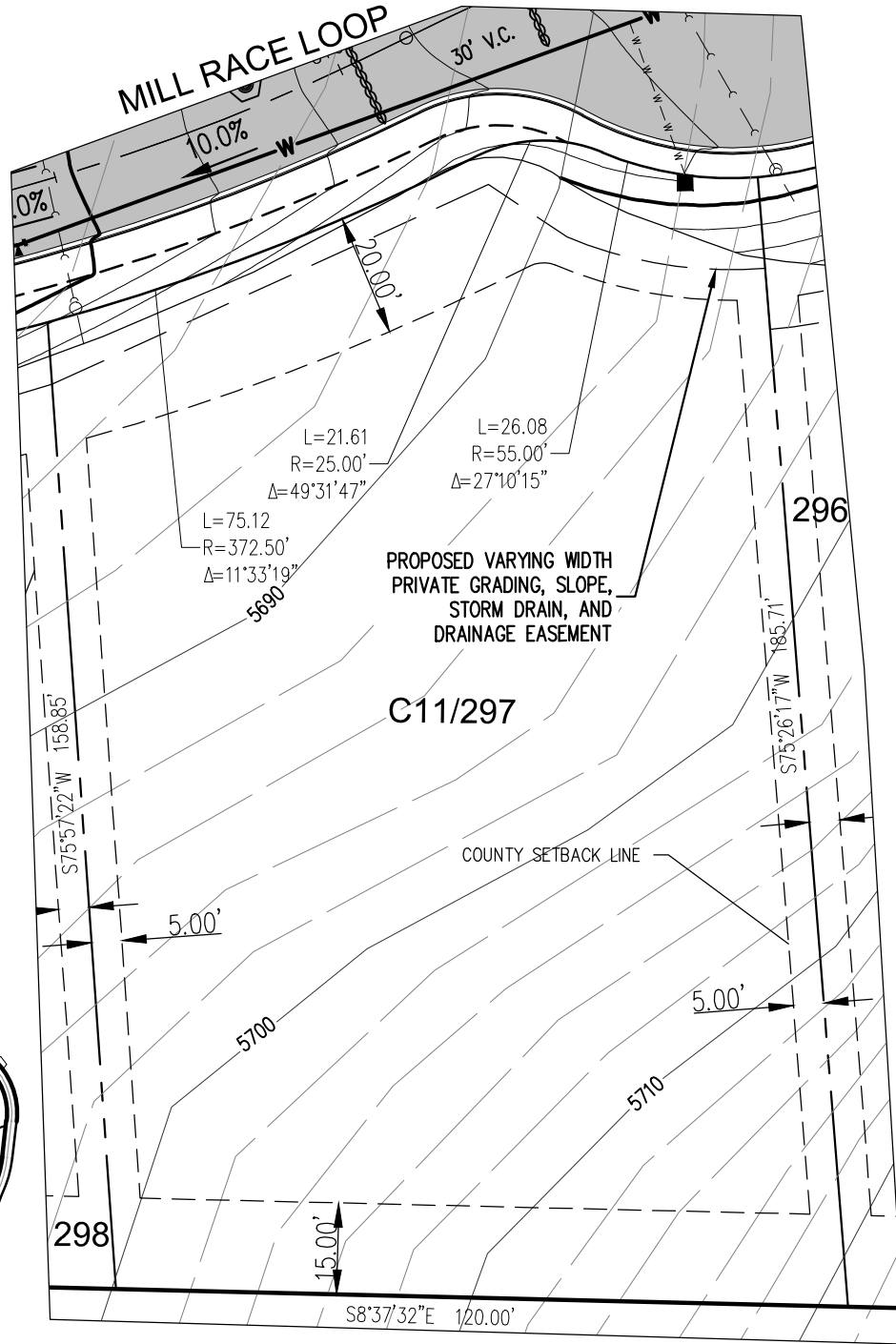
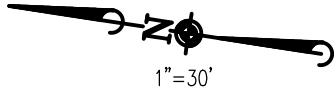
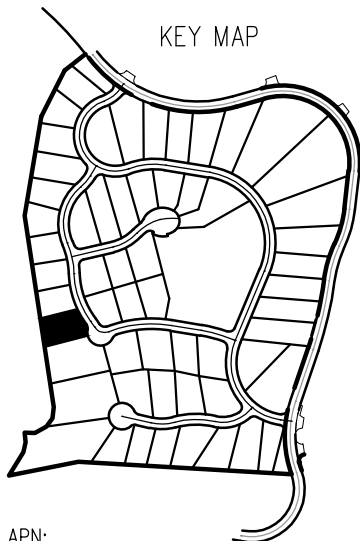


( IN FEET )  
1 inch = 30 ft.



THIS LOT SUBJECT TO HILLSIDE GRADING REQUIREMENTS PER DOUGLAS COUNTY CODE SECTION 20.690.030 (K).



APN:  
ADDRESS:  
LOT AREA: 21,144 SF (0.49 ACRES)

© 2015 MANHARD CONSULTING, LTD. ALL RIGHTS RESERVED

**Manhard**  
CONSULTING LTD

3830 Double R Blvd, Suite 101, Reno, NV 89521 tel: (775) 746-3500 fax: (775) 746-3520 www.manhard.com  
Civil Engineers • Surveyors • Water Resources Engineers • Water & Wastewater Engineers  
Construction Managers • Environmental Scientists • Landscape Architects • Planners

CLEAR CREEK AT TAHOE UNIT 2	
DOUGLAS COUNTY, NEVADA	
LOT 297	
PROJ. MGR.: DMK	SHEET
DRAWN BY:	<b>EXHIBIT 1</b>
DATE: 8/7/2017	###
SCALE: 1"=30'	

08:51 Dwg Name: F:\Copen\Eng\Final Drawings\Plan Set\Unit 2\Exhibits\Plan with setback limits.dwg Updated By: Tharding