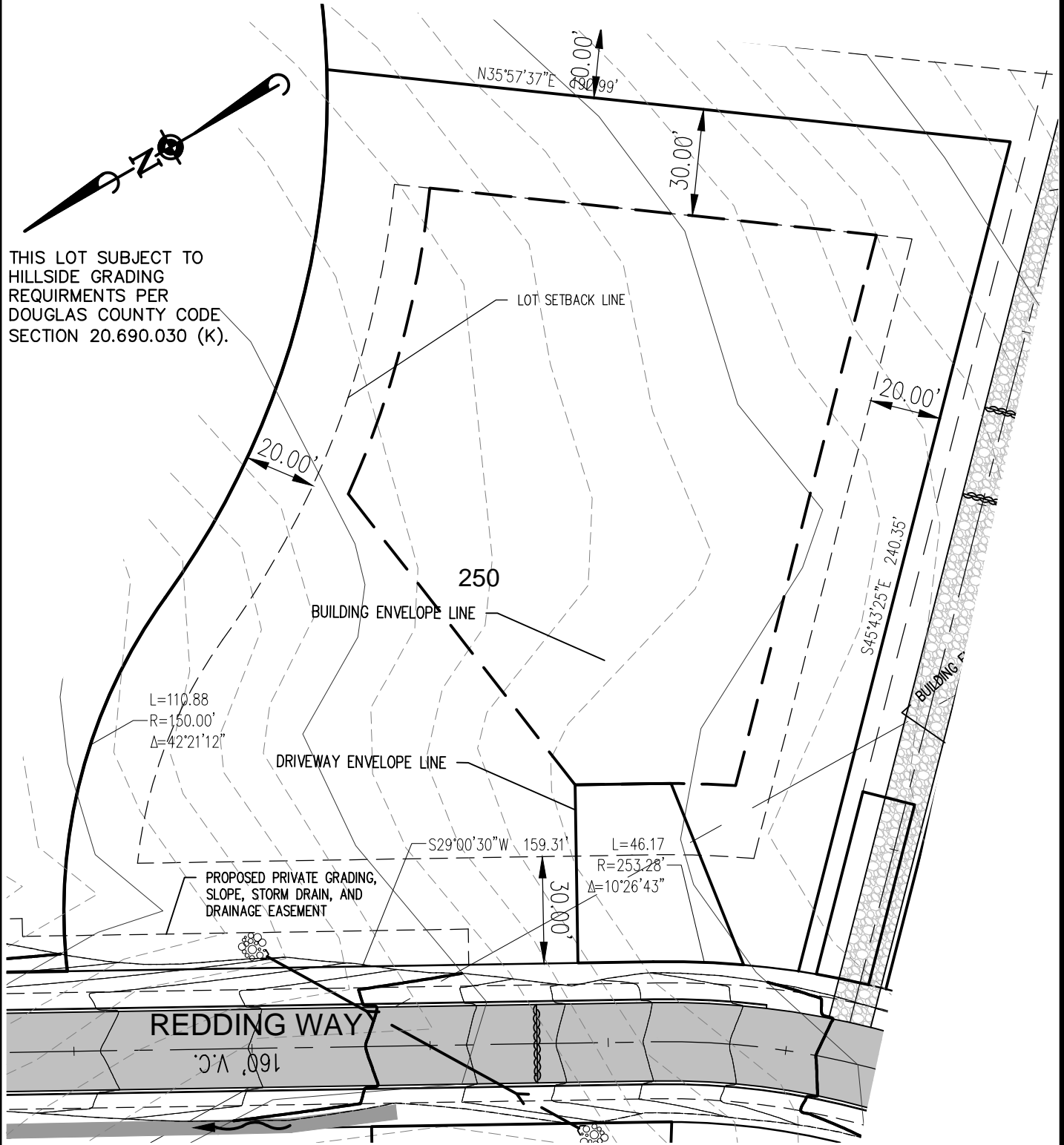


THIS LOT SUBJECT TO  
HILLSIDE GRADING  
REQUIREMENTS PER  
DOUGLAS COUNTY CODE  
SECTION 20.690.030 (K).



APN:  
ADDRESS:  
LOT AREA: 48,373 SF (1.11 ACRES)

© 2015 MANHARD CONSULTING, LTD. ALL RIGHTS RESERVED



9900 Double R Blvd, Suite 101, Reno, NV 89521 tel: (775) 746-3300 fax: (775) 746-3320 www.manhard.com  
Civil Engineers - Surveyors - Water Resources Engineers - Water & Wastewater Engineers  
Construction Managers - Environmental Scientists - Landscape Architects - Planners

CLEAR CREEK AT TAHOE	
DOUGLAS COUNTY, NEVADA	
LOT 250	
PROJ. MGR.: _____	SHEET
DRAWN BY: _____	1 OF 1
DATE: 5/26/2016	
SCALE: 1"=40'	

Dwg Name: P:\Ccpdcd\dwg\Eng\Final Drawings\Plan Set\Phase 1\Individual Lot Plans\Individual Lots 249-268.dwg Updated By: Tharding 16:08