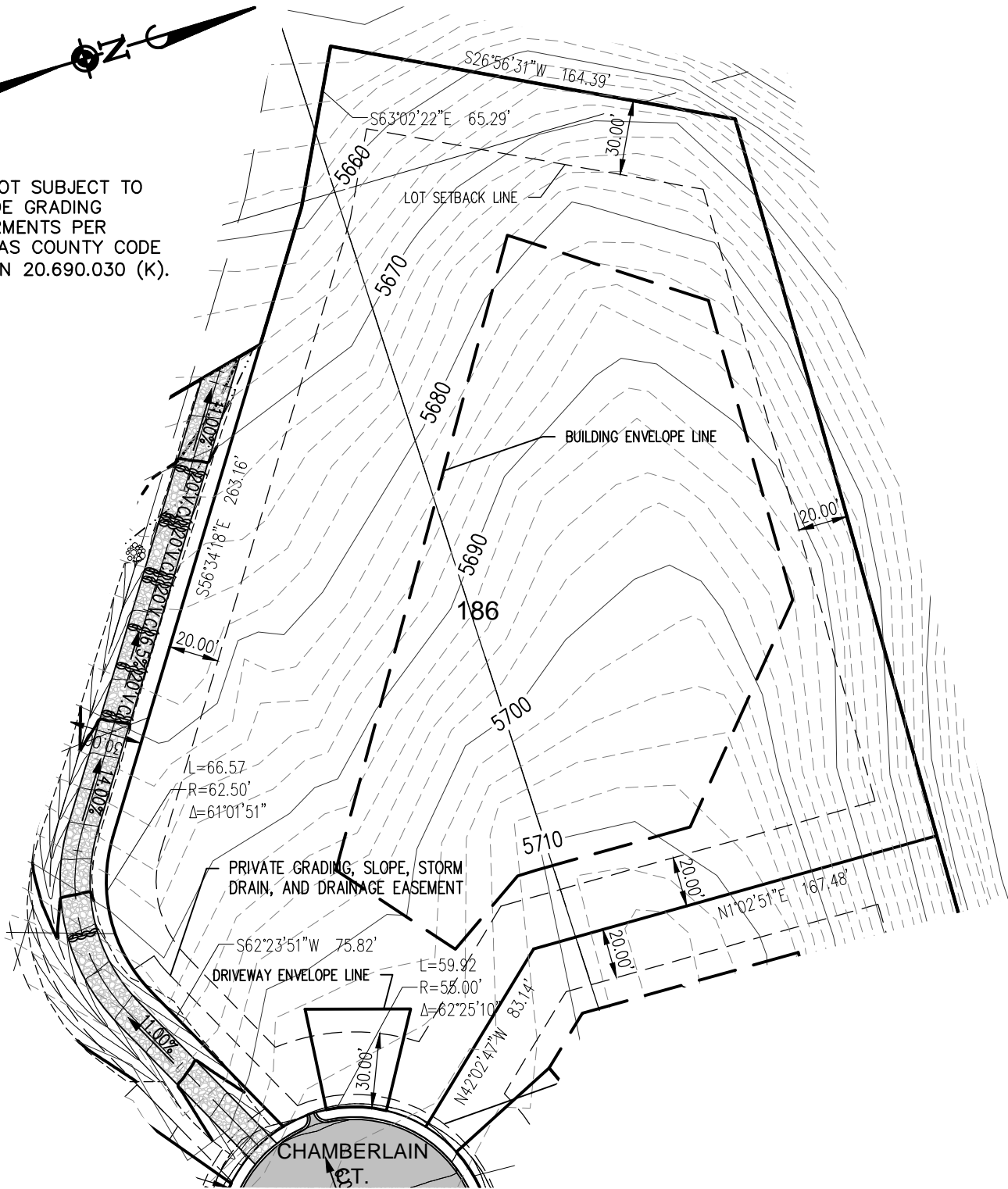


THIS LOT SUBJECT TO  
HILLSIDE GRADING  
REQUIRMENTS PER  
DOUGLAS COUNTY CODE  
SECTION 20.690.030 (K).



APN:  
ADDRESS:  
LOT AREA: 92,092 SF (2.11 ACRES)

© 2015 MANHARD CONSULTING, LTD. ALL RIGHTS RESERVED

**Manhard**  
CONSULTING LTD<sup>TM</sup>

9900 Double R Blvd, Suite 101, Reno, NV 89521 tel: (775) 746-3300 fax: (775) 746-3320 www.manhard.com  
Civil Engineers - Surveyors - Water Resources Engineers - Water & Wastewater Engineers  
Construction Managers - Environmental Scientists - Landscape Architects - Planners

<b>CLEAR CREEK AT TAHOE</b>	
<b>DOUGLAS COUNTY, NEVADA</b>	
<b>LOT 186</b>	
PROJ. MGR.: _____	SHEET
DRAWN BY: _____	<b>1</b> OF <b>1</b>
DATE: <b>5/25/2016</b>	
SCALE: <b>1"=60'</b>	

Dwg Name: P:\Cepdcn\dwg\Eng\Final Drawings\Plan Set\Phase 1\Individual Lot Plans\Individual Lots 21-25, 51, 123-124 and 176-188.dwg Updated By: JHarding 16:26