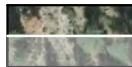


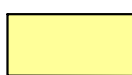




HOMESITE 52

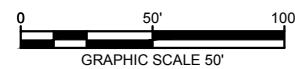
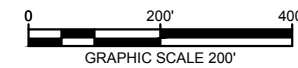
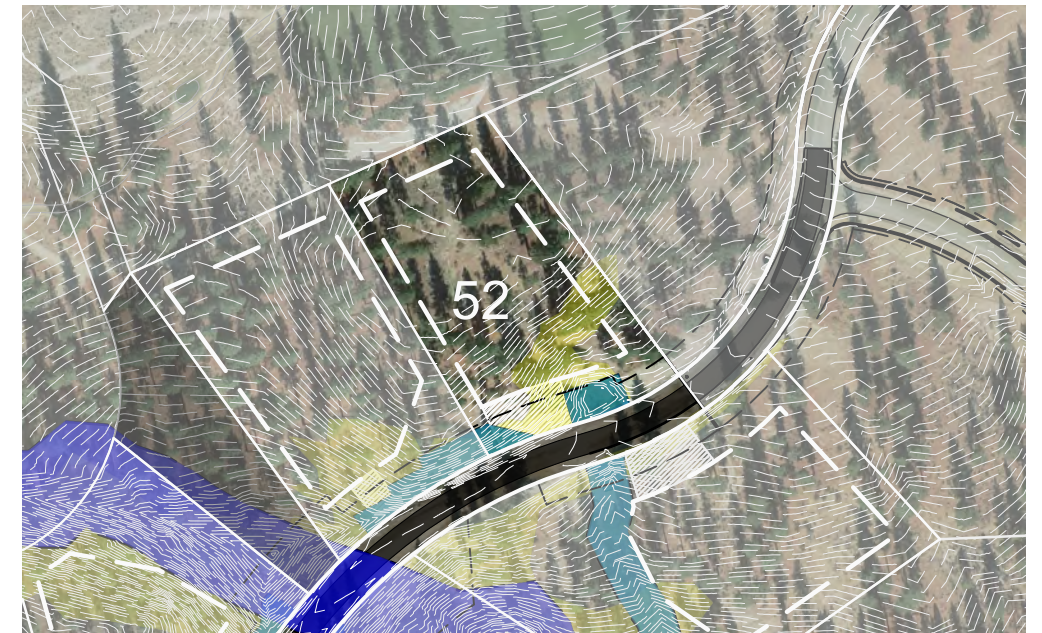
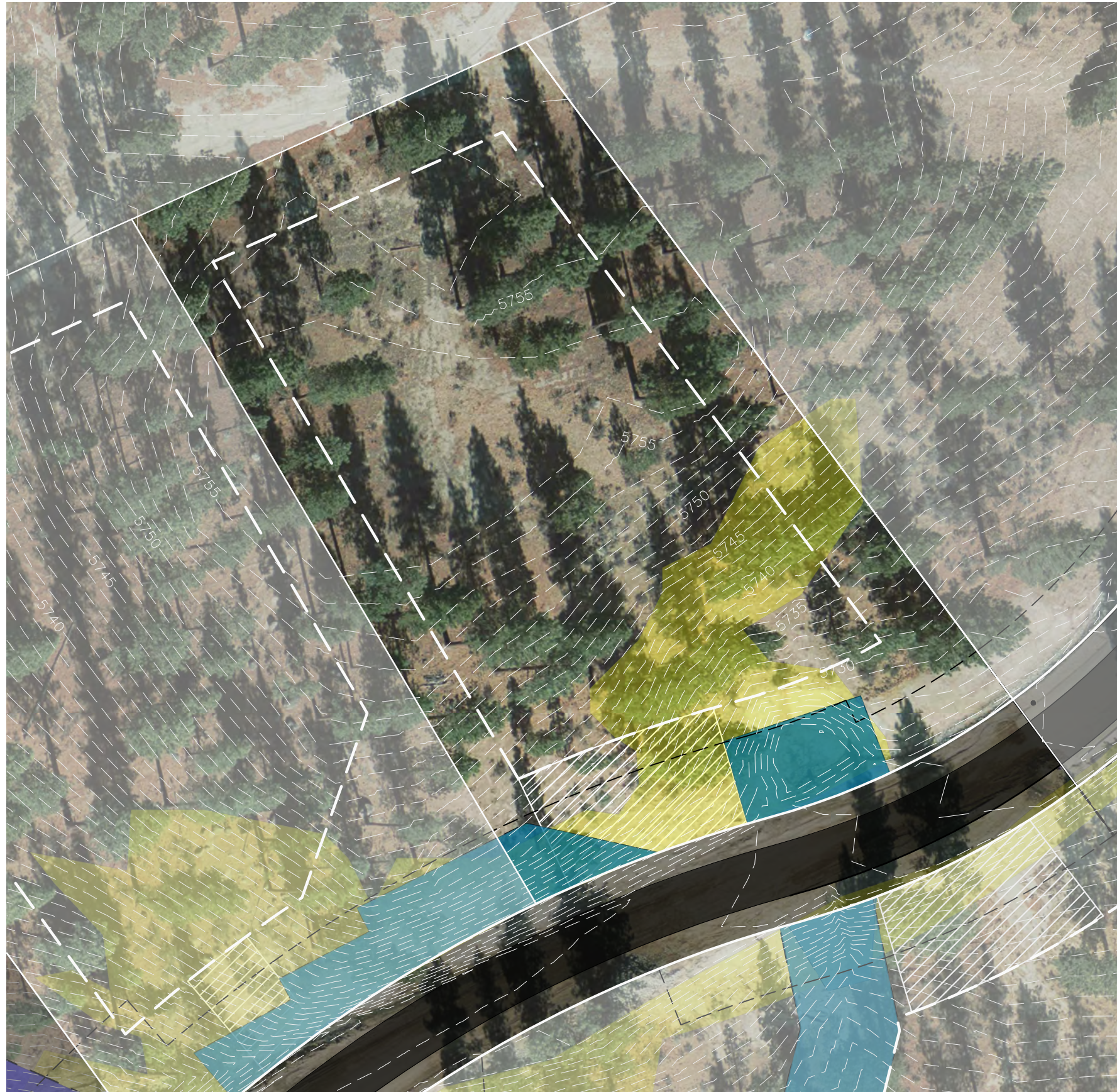


-  LOT LINE
-  BUILDING ENVELOPE
-  SUGGESTED DRIVEWAY LOCATIONS
-  SLOPE CONSTRAINTS (+25%)
-  DRAINAGE EASEMENTS
-  USGS RESTRICTED USE AREA

Lot Size: 1.50 Acres
Building Envelope: 36,653 Sq. Ft.

THIS LOT SUBJECT TO HILLSIDE GRADING REQUIREMENTS PER DOUGLAS COUNTY CODE SECTION 20.690.030 (K).

EASEMENTS, SETBACKS, AND BUILDING ENVELOPE ARE PRELIMINARY AND SUBJECT TO CHANGE WITH FINAL DESIGN.



K:\FRL\CIVIL\088151200-CLEAR CREEK TAHOE\DWG\UNIT 3\A\EXHIBITS\PLANS\HOMESITE PLANS (3).DWG
10/12/2019 6:17 PM

DWG NAME
LAST SAVED

Kimley»Horn

5370 Kietzke Lane
Suite 100
Reno, Nevada 89511
775-200-1967

NOTE: THIS PLAN IS CONCEPTUAL IN NATURE AND HAS BEEN PRODUCED WITHOUT THE BENEFIT OF A SURVEY, TOPOGRAPHY, UTILITIES, CONTACT WITH THE CITY, ETC.