

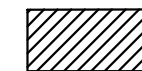
HOMESITE 36



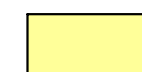
LOT LINE



BUILDING ENVELOPE



SUGGESTED
DRIVEWAY LOCATIONS



SLOPE CONSTRAINTS
(+25%)



DRAINAGE EASEMENTS

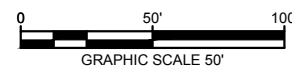
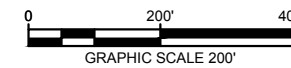
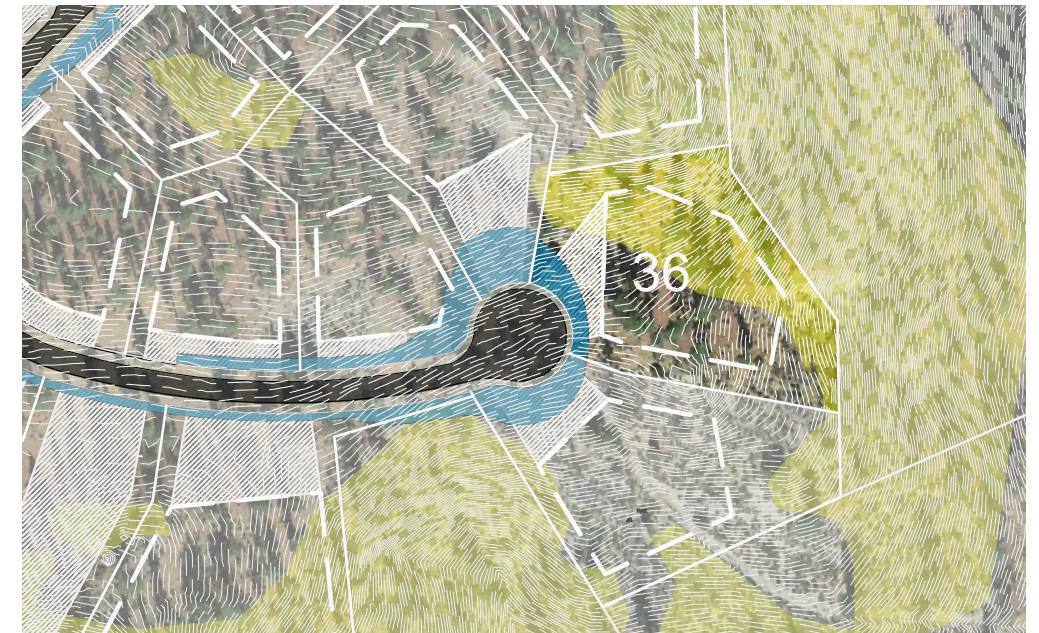
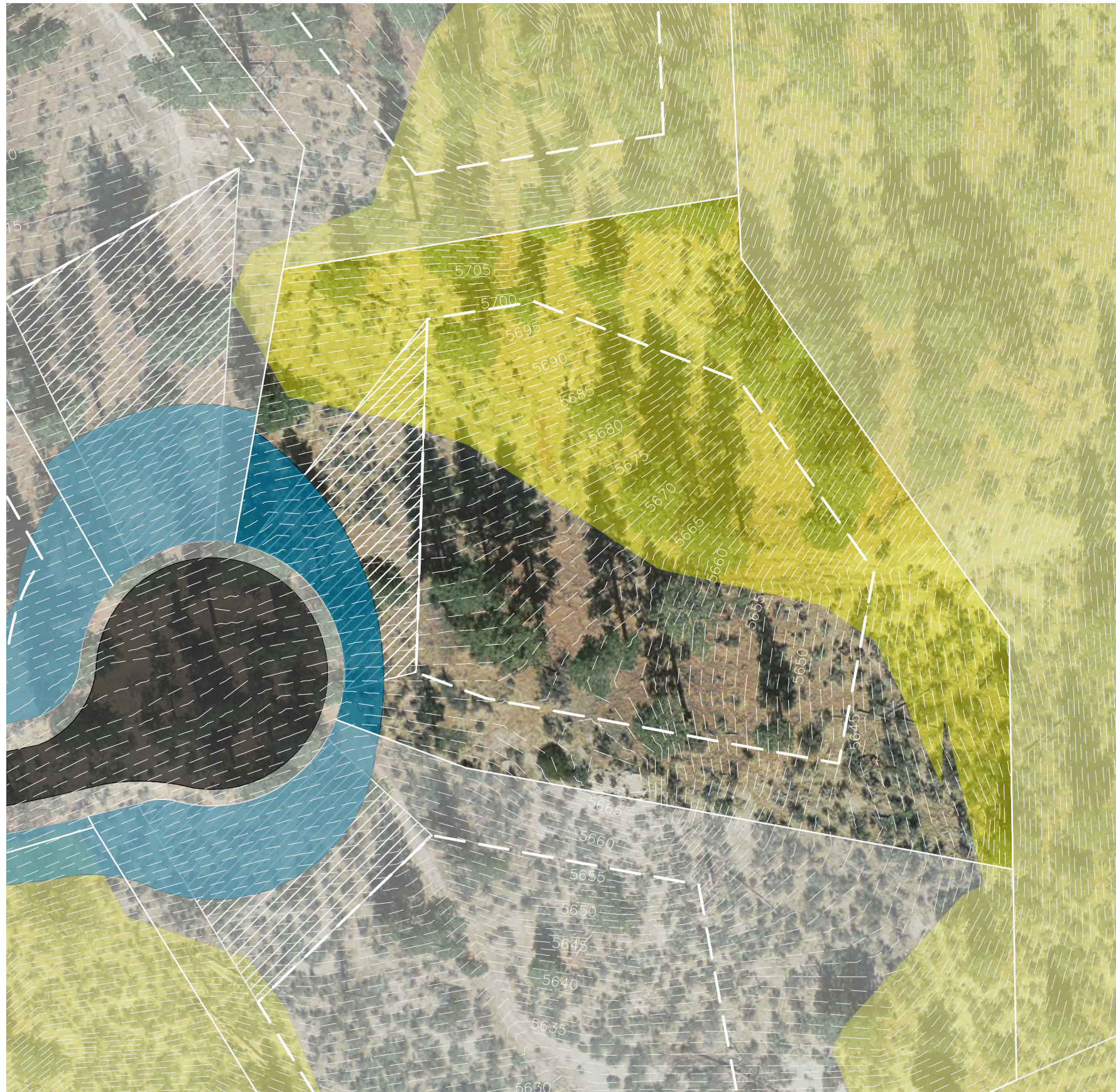


USGS RESTRICTED
USE AREA

Lot Size: 1.39 Acres
Building Envelope: 26,902 Sq. Ft.

THIS LOT SUBJECT TO HILLSIDE GRADING
REQUIREMENTS PER DOUGLAS COUNTY
CODE SECTION 20.690.030 (K).

EASEMENTS, SETBACKS, AND BUILDING
ENVELOPE ARE PRELIMINARY AND
SUBJECT TO CHANGE WITH FINAL
DESIGN.



K:\FRL\CIVIL\088151200-CLEAR CREEK TAHOE\DWG\UNIT 3A\EXHIBITS\PLANS\HOMESITE PLANS.DWG
10/12/2019 3:44 PM

DWG NAME
LAST SAVED

Kimley»Horn

5370 Kietzke Lane
Suite 100
Reno, Nevada 89511
775-200-1967

NOTE: THIS PLAN IS CONCEPTUAL IN NATURE AND HAS BEEN PRODUCED WITHOUT THE BENEFIT OF A SURVEY, TOPOGRAPHY, UTILITIES, CONTACT WITH THE CITY, ETC.