


HOMESITE 15

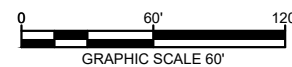
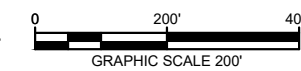
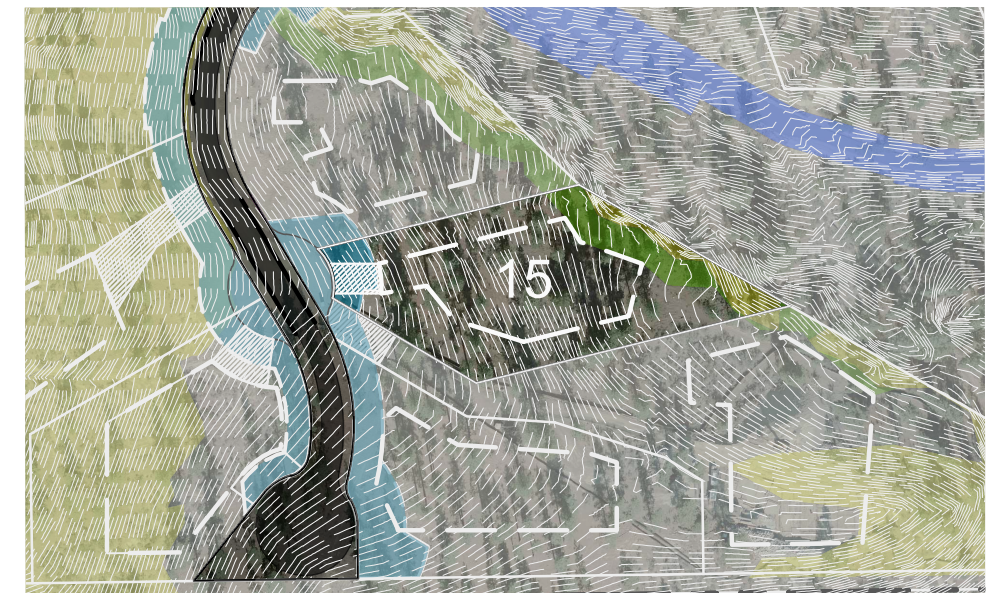
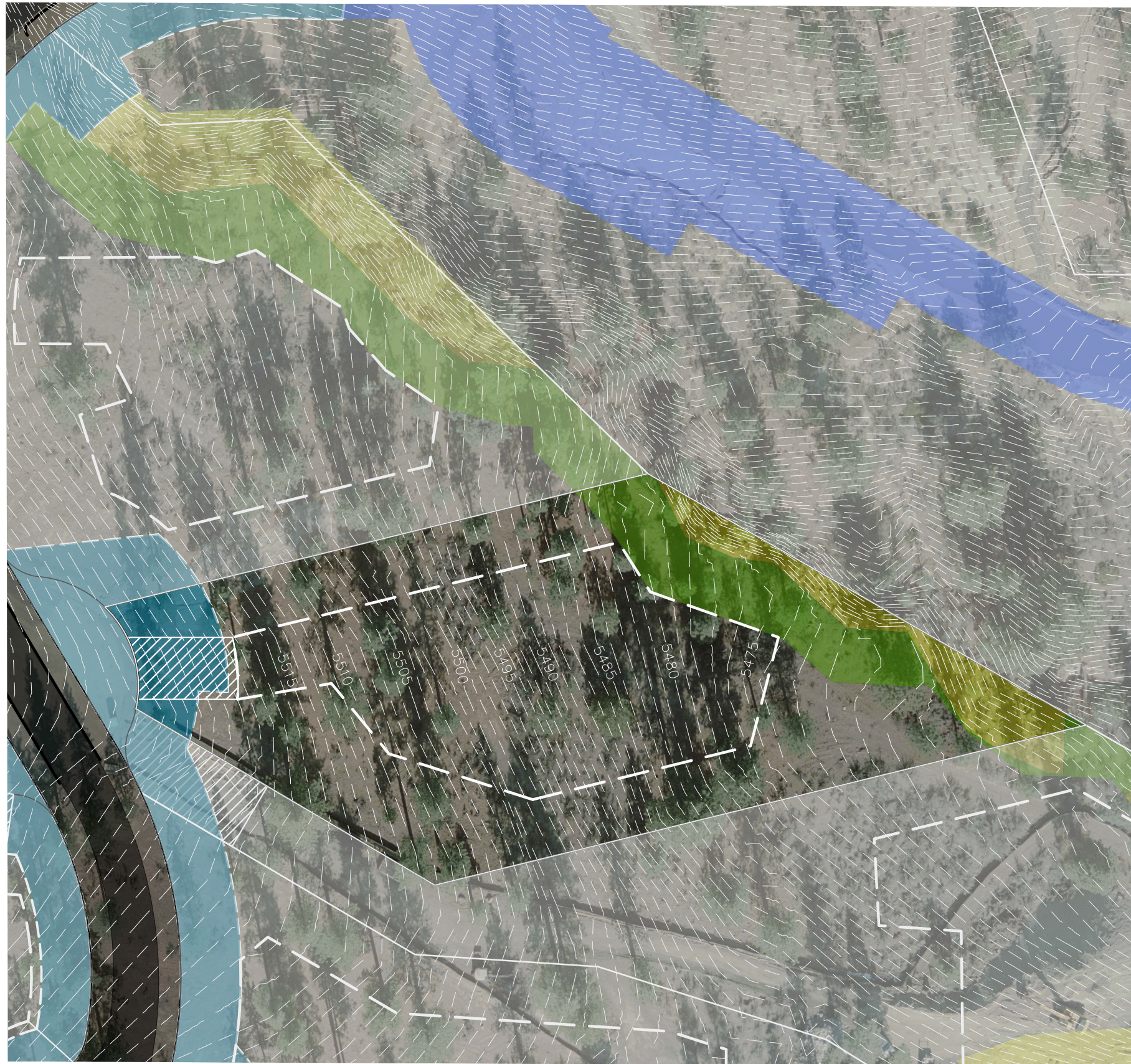


CLEAR CREEK
TAHOE

-  LOT LINE
-  BUILDING ENVELOPE
-  SUGGESTED DRIVEWAY LOCATIONS
-  SLOPE CONSTRAINTS (+25%)
-  DRAINAGE EASEMENTS
-  USGS RESTRICTED USE AREA
-  USGS BLUE LINE STREAM

Lot Size: 1.31 Acres
Building Envelope: 21,228 Sq. Ft.

THIS LOT SUBJECT TO HILLSIDE GRADING REQUIREMENTS PER DOUGLAS COUNTY CODE SECTION 20.690.030 (K).



K:\FRL\CIVIL\08815\200-CLEAR CREEK TAHOE\DWG\UNIT 3A\EXHIBIT\PLANS\HOMESITE PLANS LOT 15.DWG
5/6/2020 1:54 PM

DWG NAME
LAST SAVED

Kimley»Horn

5370 Kietzke Lane
Suite 100
Reno, Nevada 89511
775-200-1967

NOTE: THIS PLAN IS CONCEPTUAL IN NATURE AND HAS BEEN PRODUCED WITHOUT THE BENEFIT OF A SURVEY, TOPOGRAPHY, UTILITIES, CONTACT WITH THE CITY, ETC.