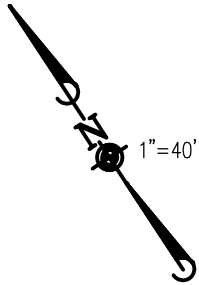
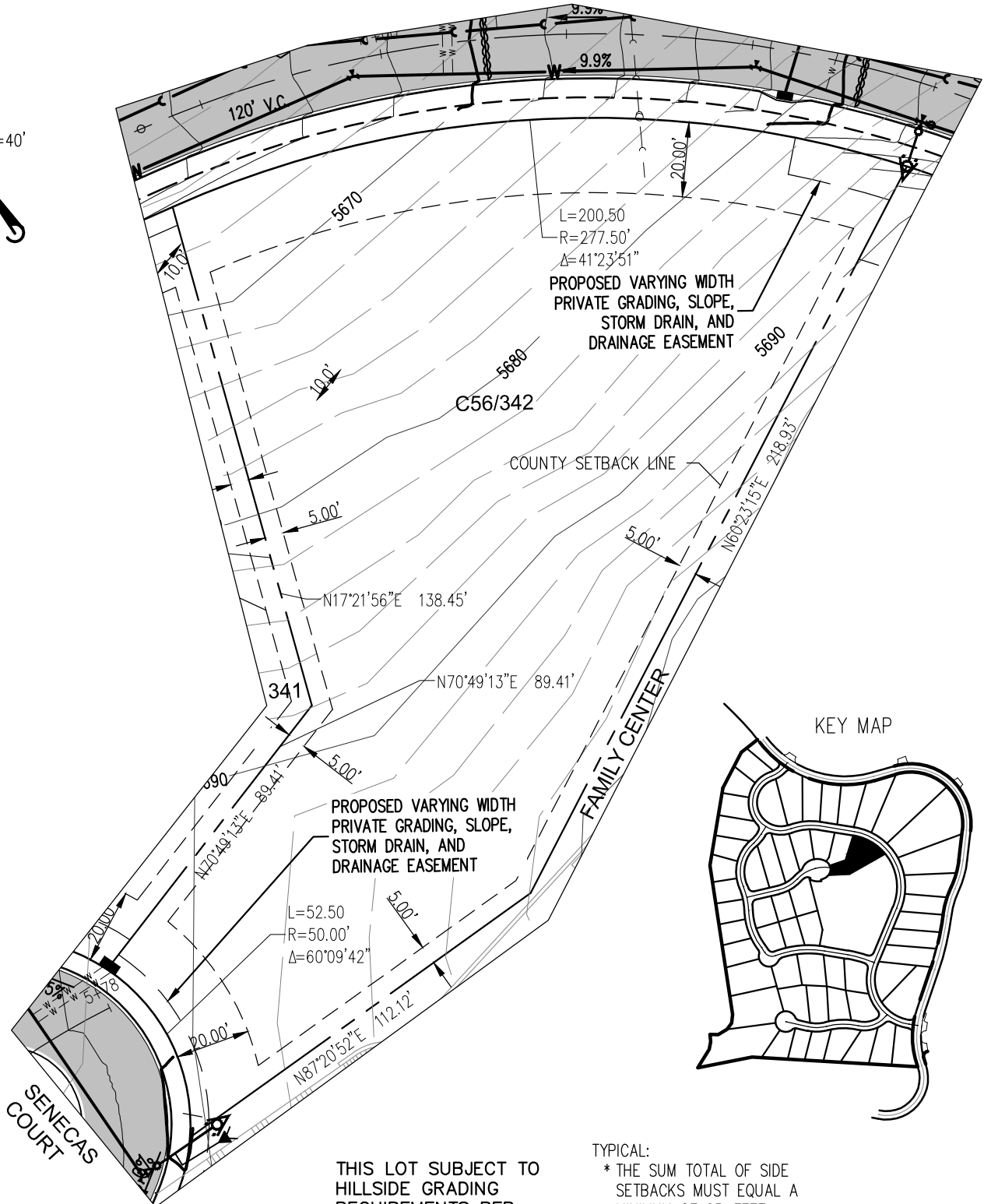


(IN FEET)
1 inch = 40 ft.



1"=40'

SUMMIT CAMP WAY



THIS LOT SUBJECT TO
HILLSIDE GRADING
REQUIREMENTS PER
DOUGLAS COUNTY CODE
SECTION 20.690.030 (K).

TYPICAL:
* THE SUM TOTAL OF SIDE
SETBACKS MUST EQUAL A
MINIMUM OF 25- FEET.
(SEE C.C.T DESIGN GUIDELINE
COTTAGE COMMUNITY ADDENDUM)

APN:
ADDRESS:
LOT AREA: 29,882 SF (0.69 ACRES)

© 2015 MANHARD CONSULTING, LTD. ALL RIGHTS RESERVED

Manhard
CONSULTING LTD

3930 Double R Blvd, Suite 101, Reno, NV 89521 tel: (775) 746-3500 fax: (775) 746-3520 www.manhard.com
Civil Engineers • Surveyors • Water Resources Engineers • Water & Wastewater Engineers
Construction Managers • Environmental Scientists • Landscape Architects • Planners

| | |
|-----------------------------|------------------|
| CLEAR CREEK AT TAHOE UNIT 2 | |
| DOUGLAS COUNTY, NEVADA | |
| LOT 342 | |
| PROJ. MGR.: DMK | SHEET |
| DRAWN BY: | EXHIBIT 1 |
| DATE: 8/7/2017 | ### |
| SCALE: 1"=40' | |