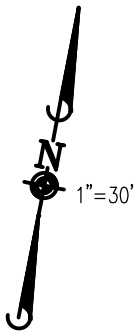
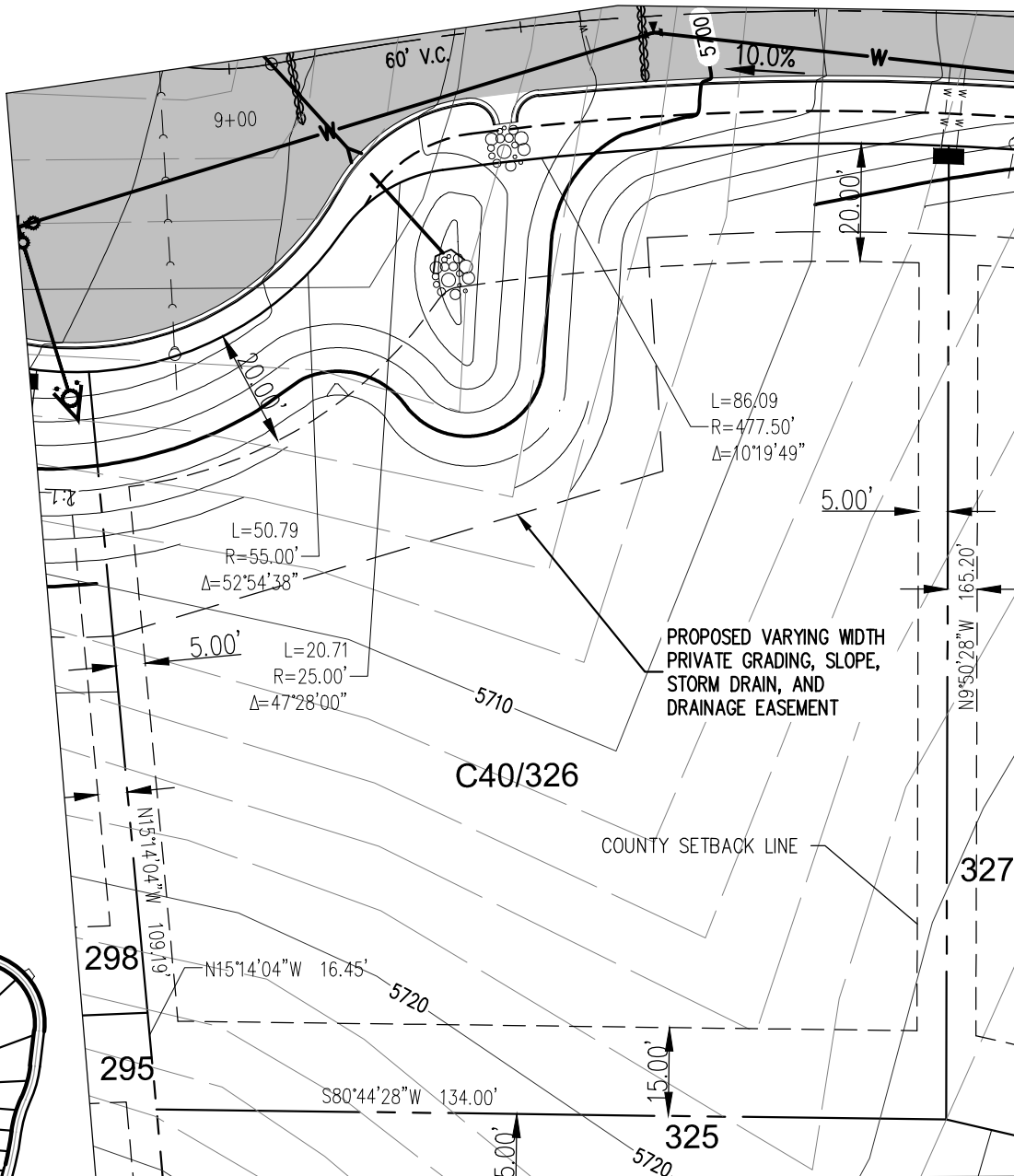


(IN FEET)
1 inch = 30 ft.



MILL RACE LOOP

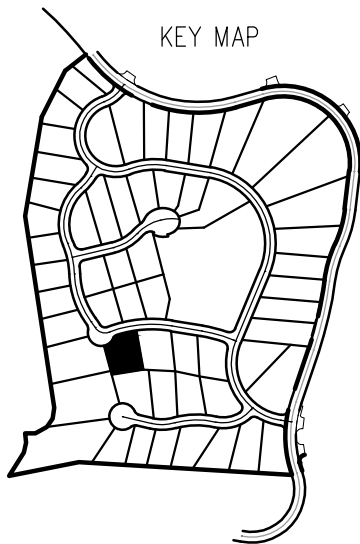


PROPOSED VARYING WIDTH
PRIVATE GRADING, SLOPE,
STORM DRAIN, AND
DRAINAGE EASEMENT

COUNTY SETBACK LINE

C40/326

KEY MAP



THIS LOT SUBJECT TO
HILLSIDE GRADING
REQUIREMENTS PER
DOUGLAS COUNTY CODE
SECTION 20.690.030 (K).

TYPICAL:
* THE SUM TOTAL OF SIDE
SETBACKS MUST EQUAL A
MINIMUM OF 25- FEET.
(SEE C.C.T DESIGN GUIDELINE
COTTAGE COMMUNITY ADDENDUM)

APN:
ADDRESS:
LOT AREA: 21,688 SF (0.50 ACRES)

© 2015 MANHARD CONSULTING, LTD. ALL RIGHTS RESERVED



3930 Double R Blvd, Suite 101, Reno, NV 89521 tel: (775) 746-3500 fax: (775) 746-3520 www.manhard.com
Civil Engineers • Surveyors • Water Resources Engineers • Water & Wastewater Engineers
Construction Managers • Environmental Scientists • Landscape Architects • Planners

CLEAR CREEK AT TAHOE UNIT 2	
DOUGLAS COUNTY, NEVADA	
LOT 326	
PROJ. MGR.: DMK	SHEET
DRAWN BY:	EXHIBIT 1
DATE: 8/7/2017	###
SCALE: 1"=30'	

08:51 Dwg Name: F:\Capden\Eng\Final Drawings\Plan Set\Unit 2\Exhibits\Plan with setback limits.dwg Updated By: Tharding