

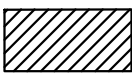
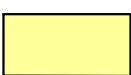




# HOMESITE 64

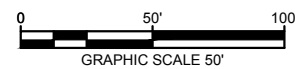
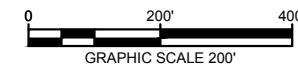
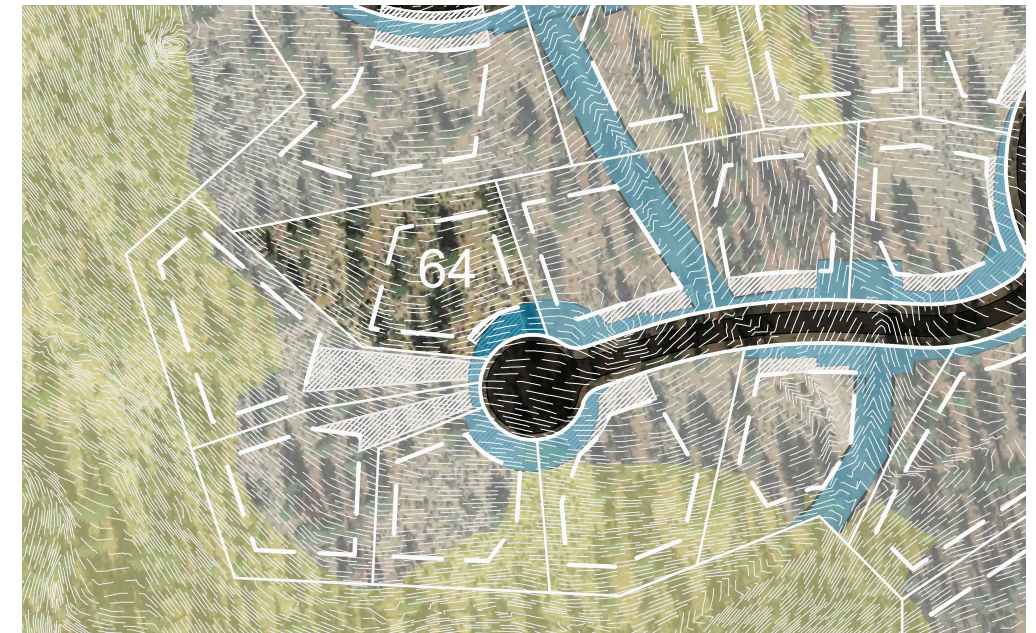
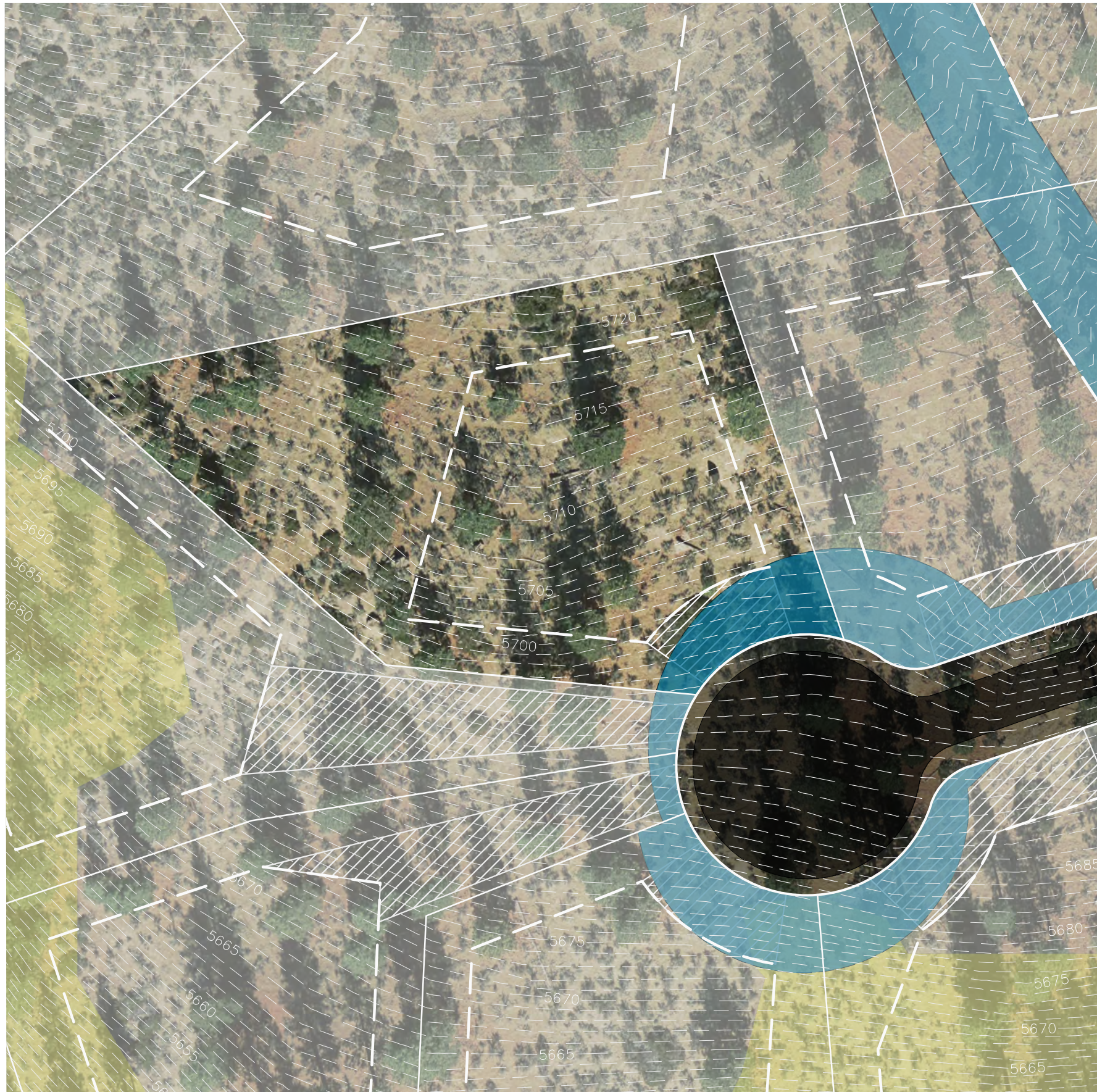


-  LOT LINE
-  BUILDING ENVELOPE
-  SUGGESTED DRIVEWAY LOCATIONS
-  SLOPE CONSTRAINTS (+25%)
-  DRAINAGE EASEMENTS
-  USGS RESTRICTED USE AREA

Lot Size: 0.86 Acres  
Building Envelope: 14,162 Sq. Ft.

THIS LOT SUBJECT TO HILLSIDE GRADING REQUIREMENTS PER DOUGLAS COUNTY CODE SECTION 20.690.030 (K).

EASEMENTS, SETBACKS, AND BUILDING ENVELOPE ARE PRELIMINARY AND SUBJECT TO CHANGE WITH FINAL DESIGN.



K:\FRL\Civil\088151200-CLEAR CREEK TAHOE\DWG\UNIT 3\EXHIBITS\PLANS\HOMESITE PLANS (4).DWG  
10/12/2019 4:04 PM

DWG NAME  
LAST SAVED

## Kimley»Horn

5370 Kietzke Lane  
Suite 100  
Reno, Nevada 89511  
775-200-1967

NOTE: THIS PLAN IS CONCEPTUAL IN NATURE AND HAS BEEN PRODUCED WITHOUT THE BENEFIT OF A SURVEY, TOPOGRAPHY, UTILITIES, CONTACT WITH THE CITY, ETC.