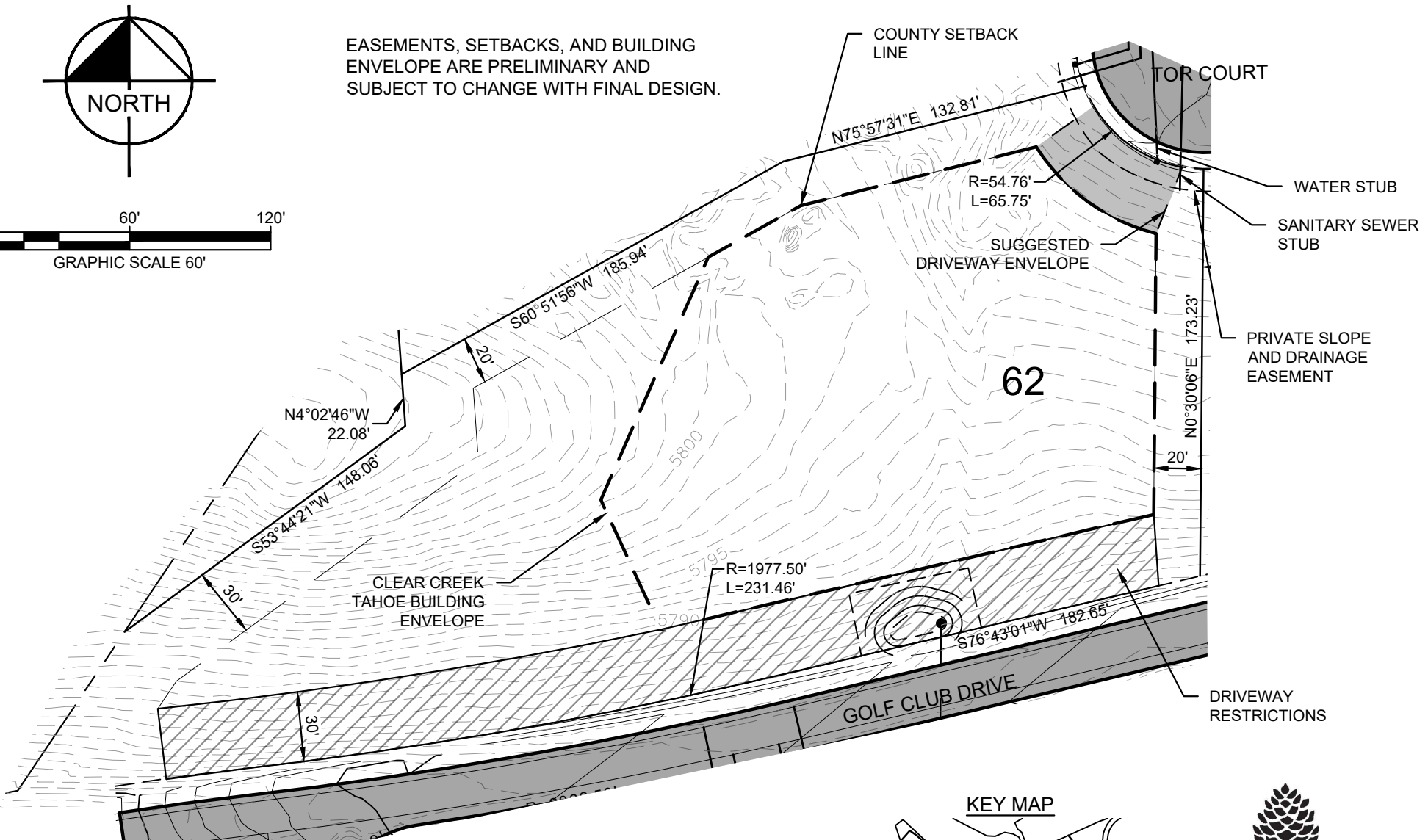


EASEMENTS, SETBACKS, AND BUILDING ENVELOPE ARE PRELIMINARY AND SUBJECT TO CHANGE WITH FINAL DESIGN.

CONNELL, SARAH 9/30/2019 8:52 AM K:\VPL\DWG\068151200-CLEAR CREEK TAHOE\DWG UNIT 3A\EXHIBITS\PLANSHEETS\LOT DIAGRAMS (2).DWG 9/27/2019 6:50 PM



Golf Estate Lot
 LOT AREA: 82,556 SF (1.88 AC)
 BUILDING ENVELOPE AREA: 34,216 SF (0.79 AC)
Lot 62

Clear Creek at Tahoe
 Douglas County, Nevada

THIS LOT SUBJECT TO HILLSIDE GRADING REQUIREMENTS PER DOUGLAS COUNTY CODE SECTION 20.690.030 (K).

A HOME CONSTRUCTED ON THIS LOT WILL REQUIRE THE USE OF AN INDIVIDUAL LOW-PRESSURE SEWER (LPS) GRINDER PUMP SYSTEM.



CLEAR CREEK
 TAHOE

Kimley»Horn

5370 Kietzke Lane
 Suite 100
 Reno, Nevada 89511
 972-335-3580

NOTE: THIS PLAN IS CONCEPTUAL IN NATURE AND HAS BEEN PRODUCED WITHOUT THE BENEFIT OF A SURVEY, TOPOGRAPHY, UTILITIES, CONTACT WITH THE CITY, ETC.

PLOTTED BY DWG NAME LAST SAVED