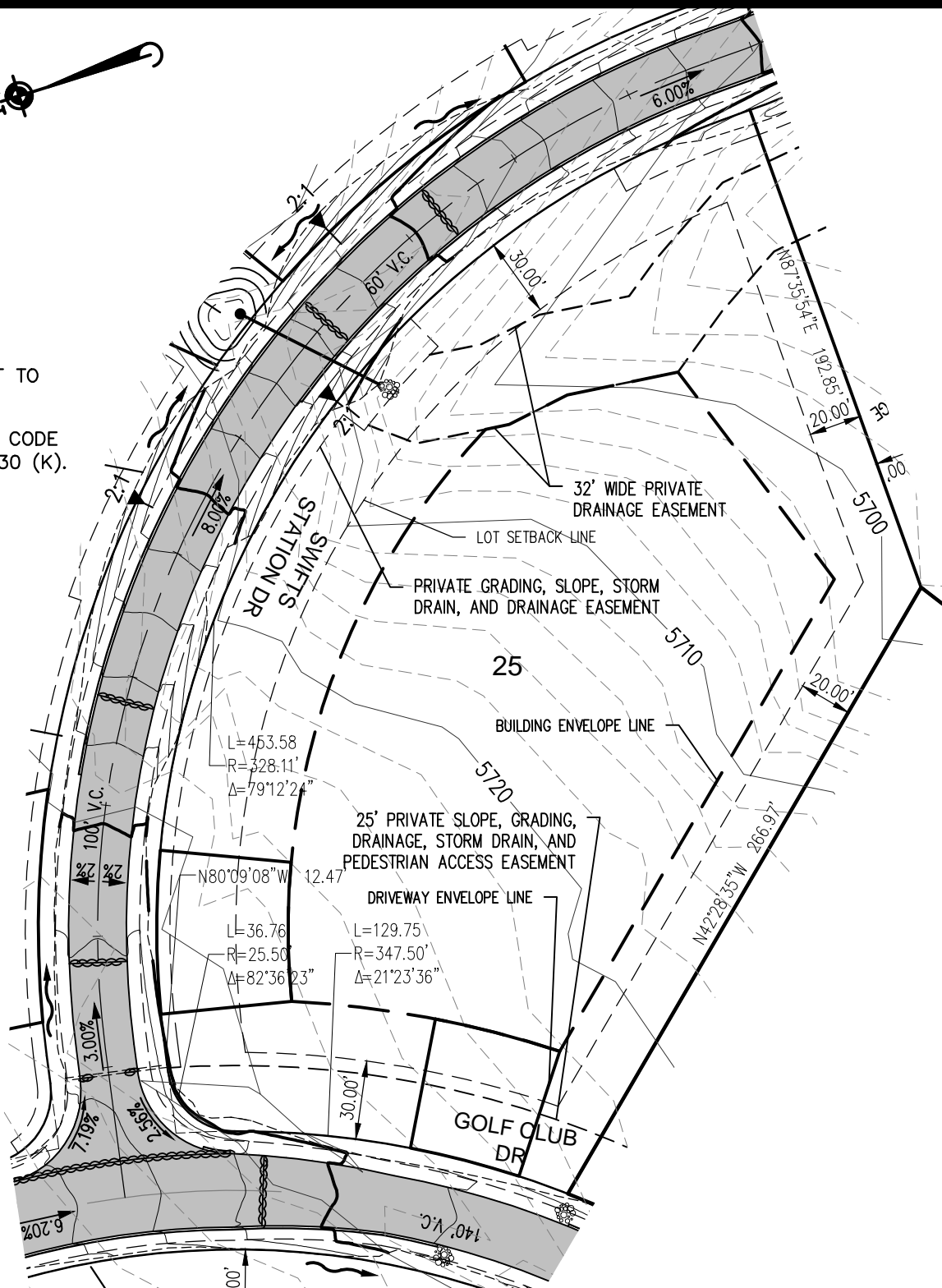




THIS LOT SUBJECT TO
 HILLSIDE GRADING
 REQUIREMENTS PER
 DOUGLAS COUNTY CODE
 SECTION 20.690.030 (K).



APN:
 ADDRESS:
 LOT AREA: 76,614 SF (1.76 ACRES)

© 2015 MANHARD CONSULTING, LTD. ALL RIGHTS RESERVED



9900 Double R Blvd, Suite 101, Reno, NV 89521 tel: (775) 746-3300 fax: (775) 746-3320 www.manhard.com
 Civil Engineers - Surveyors - Water Resources Engineers - Water & Wastewater Engineers
 Construction Managers - Environmental Scientists - Landscape Architects - Planners

| | |
|-------------------------------|---------------|
| CLEAR CREEK AT TAHOE | |
| DOUGLAS COUNTY, NEVADA | |
| LOT 25 | |
| PROJ. MGR.: _____ | SHEET |
| DRAWN BY: _____ | 1 OF 1 |
| DATE: 5/24/2016 | |
| SCALE: 1"=60' | |